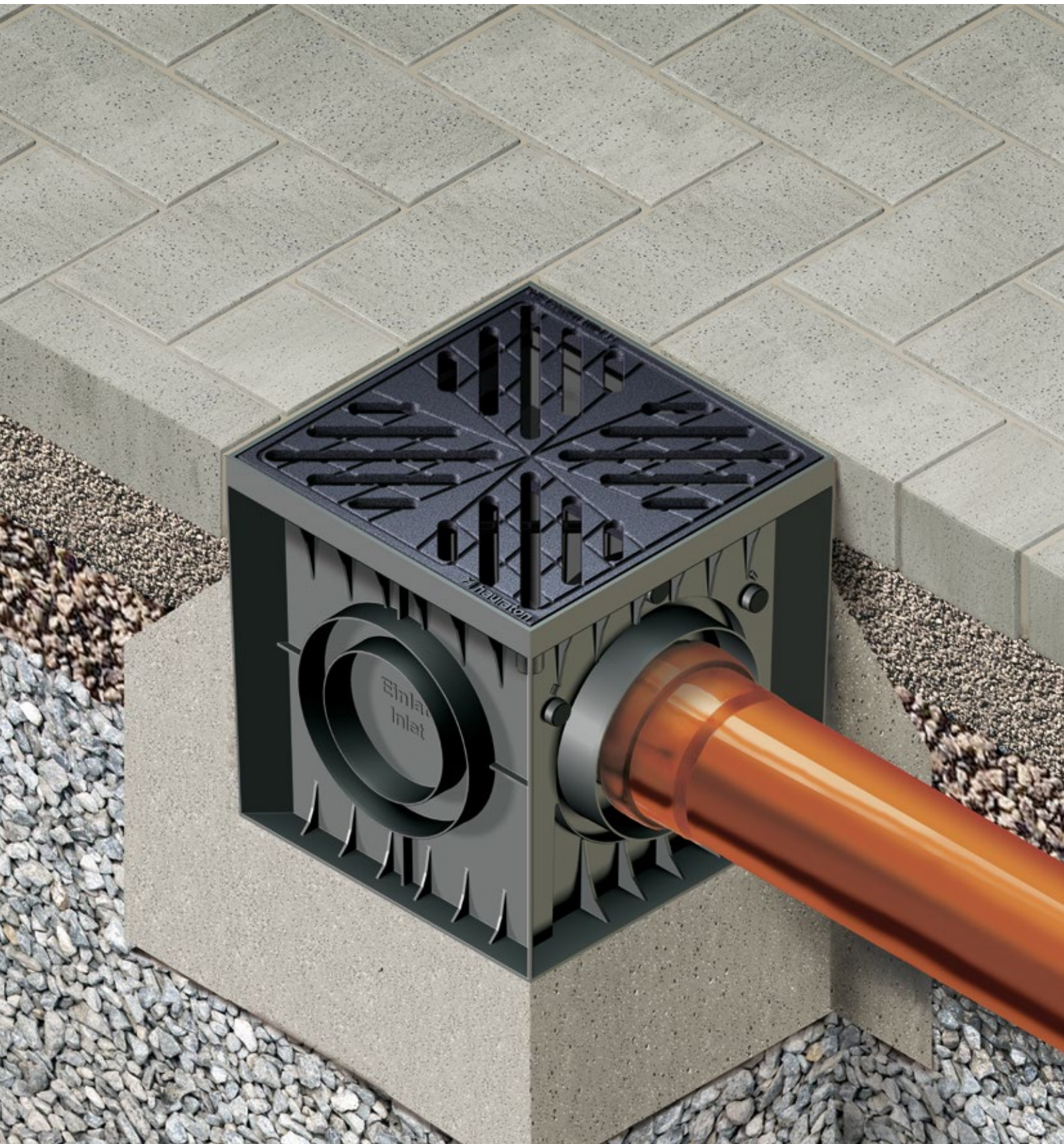


# RECYFIX POINT FASERFIX POINT STANDARD

Point drainage for yards, garages and patios.





# RECYFIX POINT FASERFIX POINT STANDARD

Point drainage for yards, garages and patios.

## 1 Requirements

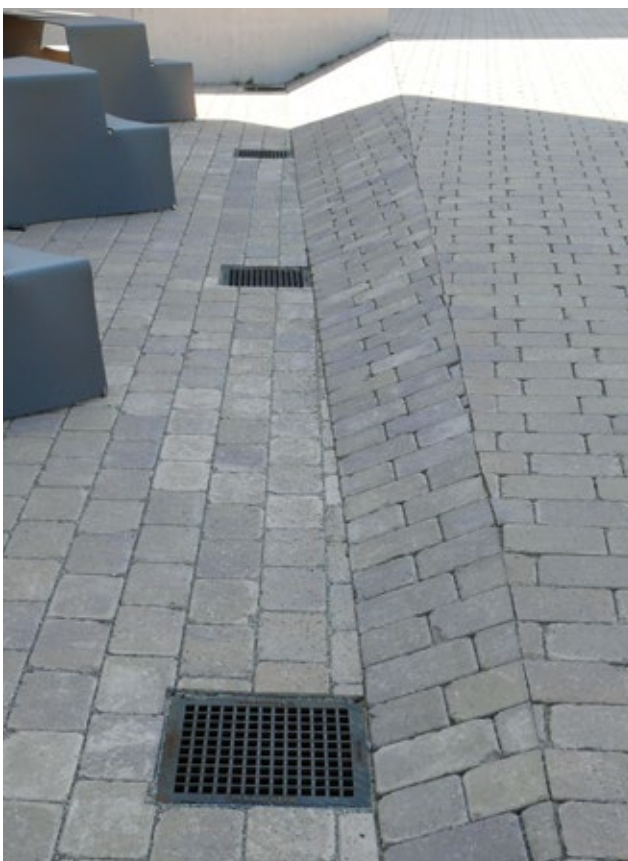
- discharge of heavy rain or or large melting water quantities at one point
- the system has to permanently withstand all expected traffic loads
- the point drainage gullies can be integrated harmoniously in the surface

## 2 Application areas

- courts
- garage forecourts
- places and parking areas
- ways

## 3 Solutions

- high stability due to materials used: polypropylene or fibre-reinforced concrete
- low weight (RECYFIX POINT) for easy transport and installation
- connection possibilities to every kind of sewage pipe
- high quality ductile iron gratings in star design and galvanised mesh gratings
- mud bucket as well as baffle as foul air trap included





Futterstreet in Saarbrücken, Germany



University of Wuppertal in Germany



University building in Saarbrücken, Germany

RECYFIX®  
PRO

RECYFIX®  
PLUS

RECYFIX®  
STANDARD

Facade Drainage

SLOTTED  
CHANNELS

RECYFIX® POINT  
FASERFIX® POINT

RECYFIX®  
GREEN

LINEFIX

TOP X

# YOUR BENEFITS WITH RECYFIX POINT

## HIGHLY ADAPTABLE

- side connection options DN/OD 110 and DN/OD 160
- vertical connection options DN/OD 160 and DN/OD 200
- extension frame for height adjustment
- central connection to sewage system = minimal installation effort

= **DESIGN FLEXIBILITY / PERFORMANCE ASSURED**



## HIGH RESISTANCE

- high UV resistance
- withstands high temperature differences
- suitable for temperatures from - 50 °C to + 80 °C and higher

= **QUALITY ASSURED / LONGEVITY**



## HIGH-GRADE MATERIAL

- **RECYFIX** - particularly robust and impact-resistant material
- **RECYFIX** = 100 % recycled and recyclable

= **QUALITY ASSURED / PERFORMANCE ASSURED**



## PRE-ASSEMBLED READY FOR INSTALLATION

- complete point inlet = one component
- easy handling in storage and on construction site

= **COST SAVINGS**



## EASY HANDLING ON SITE

- considerably lighter than point drainage made of mineral material
- easy transport and installation
- can be easily processed on site

= **TIME SAVINGS / COST SAVINGS**



## EASY CLEANING AND MAINTENANCE

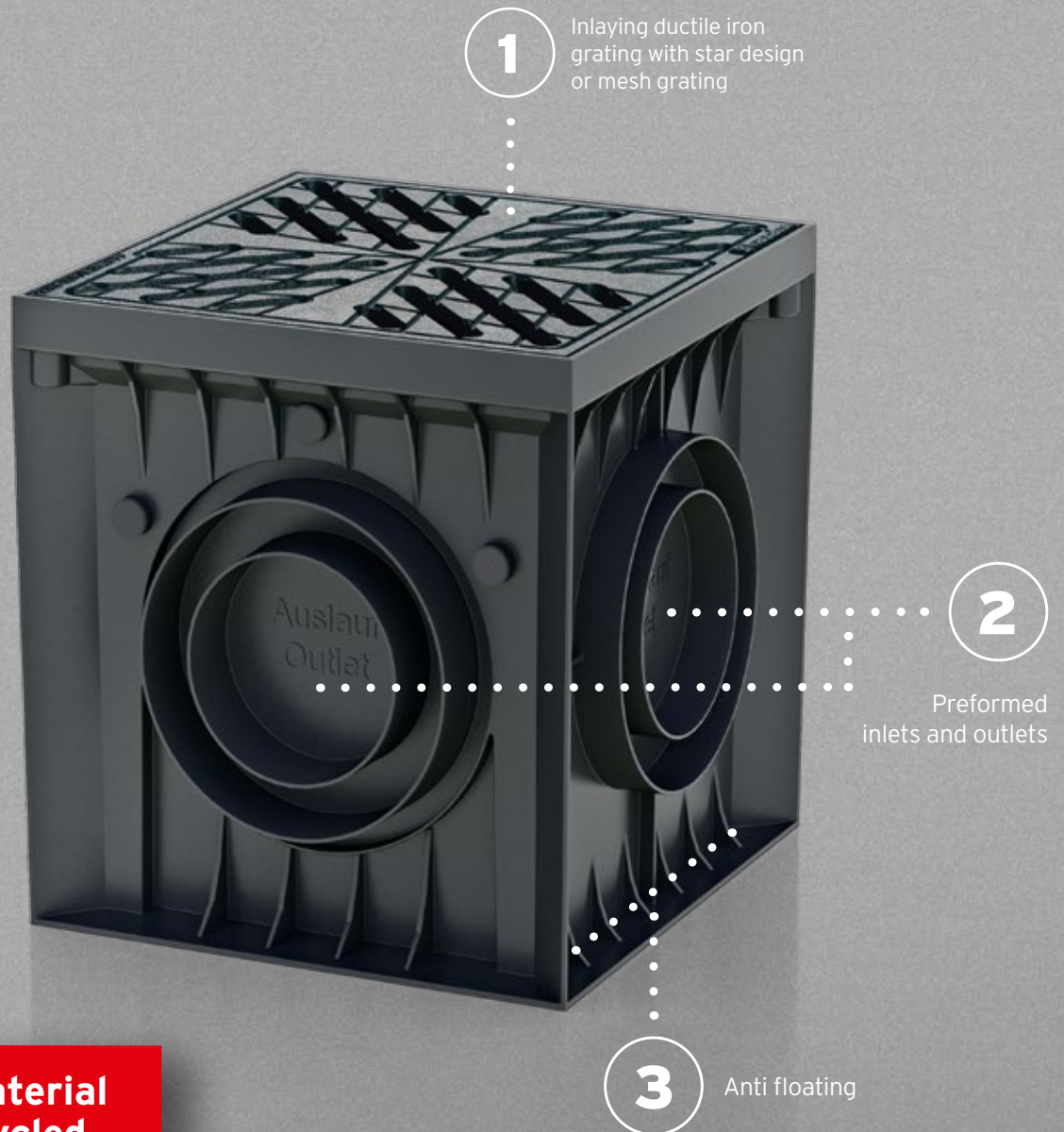
- removable sludge trap bucket enables optimum debris retention and unobstructed drainage
- integrated foul air trap

= **PERFORMANCE ASSURED / COST SAVINGS**



**IDEAL FOR ...**

point drainage of paved areas such as courtyards, walkways and squares.



**RECYFIX material  
= 100 % recycled  
composite**

# YOUR BENEFITS WITH **FASERFIX** POINT STANDARD

## HIGH-GRADE MATERIAL

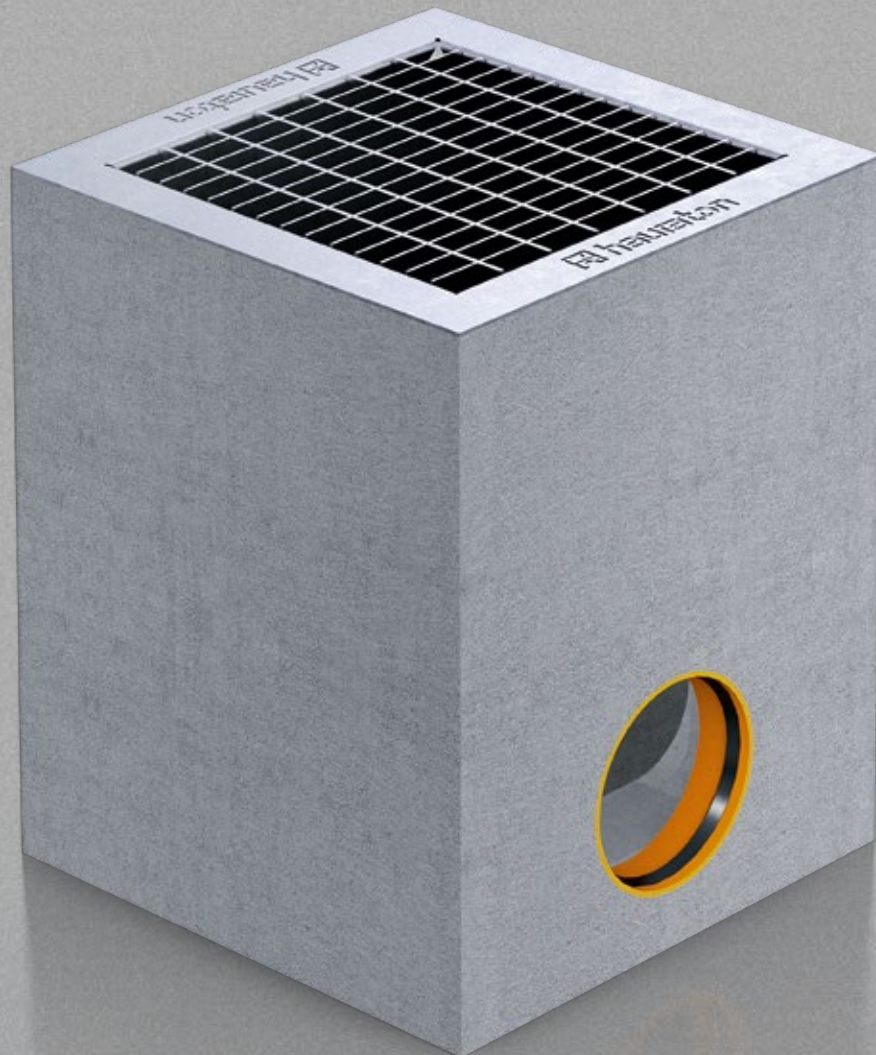
- „Made in Germany“
- optimal stability through fibre-reinforced concrete (polypropylene fibres) with low weight
- adheres well to the foundation concrete (same coefficient of thermal expansion)
- installation without grating possible
- fire resistance class A1 (non-combustible) according to DIN 4102

**= QUALITY ASSURED /  
PERFORMANCE ASSURED**



**IDEAL FOR ...**

point drainage made of fibre-reinforced concrete for applications such as yards, driveways and squares.

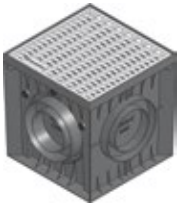


# RECYFIX®POINT 30/30

**RECYFIX®POINT 30/30, Point drainage, class B 125,**  
with foul air trap, mud bucket and KG-pipe connection DN/OD 110, DN/OD 160



Construction height 300 mm  
with ductile iron grating,  
star design SW 12 mm, black



Construction height 300 mm  
with mesh grating MW 30/15 mm,  
galvanised



Extension frame for RECYFIX POINT  
construction height 300 mm,  
increase of 106 mm

	Length mm	Width mm	Height mm	Weight kg	Item No.
Construction height 300 mm with ductile iron grating, star design SW 12 mm, black	300	300	300	6,97	32184
Construction height 300 mm with mesh grating MW 30/15 mm, galvanised	300	300	300	3,70	32183
Extension frame for RECYFIX POINT construction height 300 mm, increase of 106 mm	300	300	120	0,63	32231
Construction height 450 mm ductile iron grating star design SW 12 mm, black	300	300	450	7,90	32617
Construction height 450 mm with mesh grating MW 30/15 mm, galvanised	300	300	450	4,51	32616

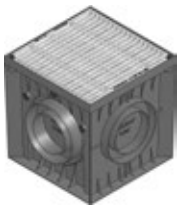
Point drainage tested according to EN 1433.

# RECYFIX® POINT 30/30

**RECYFIX® POINT 30/30, Point drainage, class C 250,**  
with foul air trap, mud bucket and KG-pipe connection DN/OD 110, DN/OD 160



Construction height 300 mm  
with longitudinal ductile iron grating,  
bar distance 8 mm, screwed, black, KTL-coated



Construction height 300 mm  
with longitudinal ductile iron grating,  
bar distance 8 mm, screwed, galvanised



Construction height 450 mm  
with longitudinal ductile iron grating,  
bar distance 8 mm, screwed, black, KTL-coated



Construction height 450 mm  
with longitudinal ductile iron grating,  
bar distance 8 mm, screwed, galvanised

	Length mm	Width mm	Height mm	Weight kg	Item No.
Construction height 300 mm with longitudinal ductile iron grating, bar distance 8 mm, screwed, black, KTL-coated	300	300	300	6,89	32612
Construction height 300 mm with longitudinal ductile iron grating, bar distance 8 mm, screwed, galvanised	300	300	300	6,89	32613
Construction height 450 mm with longitudinal ductile iron grating, bar distance 8 mm, screwed, black, KTL-coated	300	300	450	7,86	32614
Construction height 450 mm with longitudinal ductile iron grating, bar distance 8 mm, screwed, galvanised	300	300	450	7,86	32615

Point drainage tested according to EN 1433.

RECYFIX®  
PRO

RECYFIX®  
PLUS

RECYFIX®  
STANDARD

Facade Drainage

SLOTTED  
CHANNELS

RECYFIX® POINT  
FASERFIX® POINT

RECYFIX®  
GREEN

LINEFIX

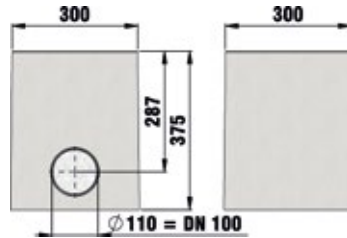
TOP X

# FASERFIX®POINT STANDARD 30/30

**FASERFIX®POINT STANDARD 30/30**, Point drainage, **trafficable**, with foul air trap and PE mud bucket



with mesh grating  
MW 30/15 mm, galvanised



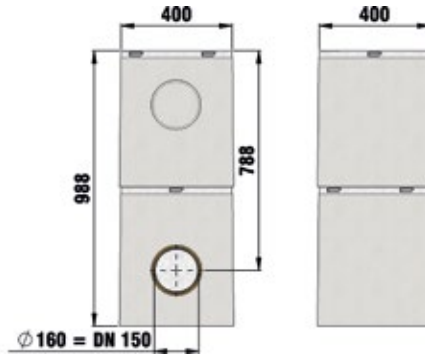
	Length mm	Width mm	Height mm	Weight kg	Item No.
with mesh grating MW 30/15 mm, galvanised	300	300	375	46,64	4430

# FASERFIX® POINT STANDARD 40/40

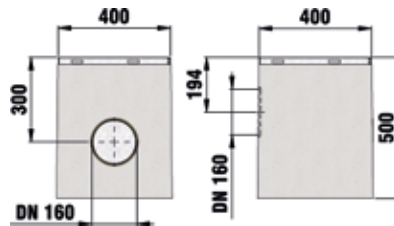
**FASERFIX® POINT STANDARD 40/40**, Point drainage, **class A 15**, with foul air trap and PE mud bucket



Size 1, 2 parts, with mesh grating MW 30/30 mm, galvanised



Size 2, 1 part, with mesh grating MW 30/30 mm, galvanised



	Length mm	Width mm	Height mm	Weight kg	Item No.
Size 1, 2 parts, with mesh grating MW 30/30 mm, galvanised	400	400	988	141,00	4860
Size 2, 1 part, with mesh grating MW 30/30 mm, galvanised	400	400	500	82,40	4760
Extension part	400	400	500	63,48	4825

RECYFIX®  
PRO

RECYFIX®  
PLUS

RECYFIX®  
STANDARD

Facade Drainage

SLOTTED  
CHANNELS

RECYFIX® POINT  
FASERFIX® POINT

RECYFIX®  
GREEN

LINEFIX

TOP X